

Drainage instructions

PleurX™ Catheter System

Getting started: Have all drainage supplies ready, then thoroughly wash your hands.



- 1** Open all packaging. Unfold blue wrapping. Place bottle near wrapping and lay access tip on blue wrapping.

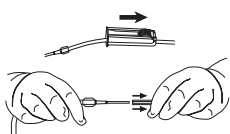


- 2** Pick each glove up by the wrist cuff and put them on.

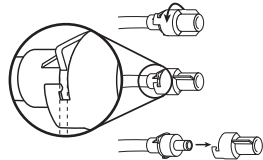


- 3** Tear open alcohol pad pouches. Place the open alcohol pad pouches on blue wrapping a short distance from sterile items.

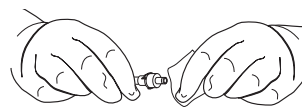
Connecting the drainage bottle: Be sure to keep the end of the catheter and access tip clean.



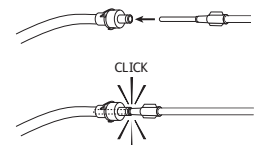
- 4** Close roller clamp completely by rolling the wheel on roller clamp toward bottle. Remove access tip cover by twisting and gently pulling. Place access tip on blue wrapping.



- 5** Take valve cap off catheter.

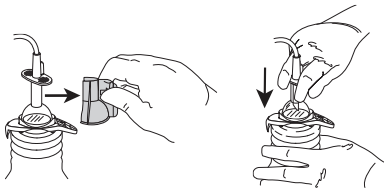


- 6** Clean around valve opening with first alcohol pad.

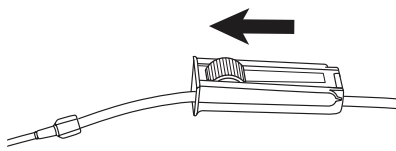


- 7** Insert the access tip into catheter valve until it clicks.

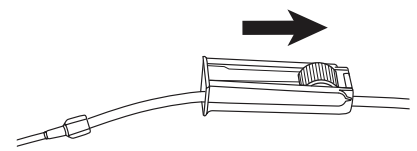
Draining fluid: Do not drain more than 1,000 mL from your chest or 2,000 mL from your abdomen at any one time.



- 8** Remove support clip from top of drainage bottle and push down T plunger.

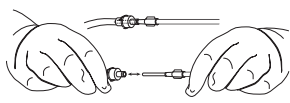


- 9** To begin draining, roll the wheel on the roller clamp away from vacuum bottle.



- 10** When finished draining, completely close the roller clamp by rolling the wheel toward the bottle.

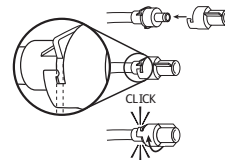
Final steps and disposal: If you have any questions or concerns, contact your doctor or nurse.



- 11** Pull access tip out of the valve and put the drainage line down.



- 12** Clean around the valve opening with second alcohol pad.



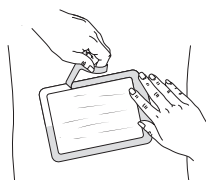
- 13** Place new cap on catheter valve and twist it until it clicks into its locked position.



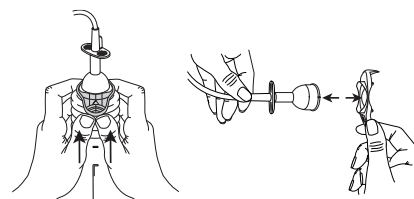
- 14** Clean around catheter site with third alcohol pad.



- 15** Place foam catheter pad around catheter and wind catheter on top of pad. Cover catheter with gauze pads.



- 16** Remove gloves from both hands. Apply self-adhesive dressing over pads.



- 17** Remove the bottle opener and cap from the bottle.

- 18** Remove the bottle opener from the drainage line and use the bottle opener to enlarge the hole in the foil seal.



- 19** Empty bottle into toilet. Place bottle in a plastic bag, seal tightly and discard.

These instructions are to be used only as a supplemental reference. Read the *Instructions for Use* that come with the drainage kits and watch the drainage video at bd.com/PleurXdrainage for more detailed instructions.

BD, Vernon Hills, IL, 60061, U.S.

bd.com

BD, the BD Logo and PleurX are trademarks of Becton, Dickinson and Company or its affiliates. © 2019 BD. All rights reserved. PPA192594 (0619/15000)

